

---

# Network Visibility for Azure and Azure Government

---

Riverbed® Network Performance Management (NPM) bring rich visibility to Azure and Azure Government cloud and hybrid cloud deployments.

## Overview

You're moving your applications to Azure to gain flexibility and scale, not to lose visibility. Riverbed NPM solutions provide network and application visibility into Azure and Azure Government Cloud for confidence in your cloud operations and visibility into user experience.

Riverbed® AppResponse™ Cloud delivers full stack networked application analysis, letting you observe all network and application interactions as they cross the virtual wire. Using powerful, flexible network and application analytics and workflows, AppResponse Cloud speeds problem diagnosis and resolution, helping you get to answers fast.

Riverbed® NetProfiler™ is available as a physical, virtual, or cloud appliance. It provides enterprise-wide network flow and security analysis and reporting across hybrid and multi-cloud environments to streamline the diagnosis and remediation of performance issues and security threats.

## Packet-based Cloud Visibility

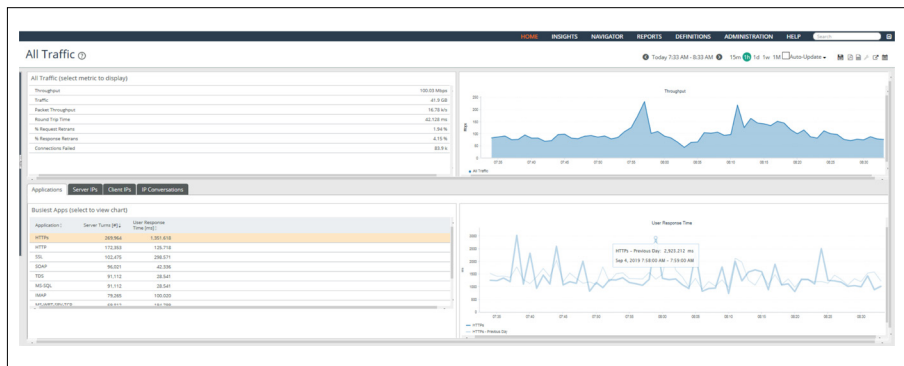
AppResponse Cloud provides the same easy-to-use visibility into cloud as environments as its on-prem and virtual counterparts. This means there's no additional learning as you adopt new environments.

### With AppResponse you get:

- **Ubiquitous visibility.** Deploy anywhere and everywhere you need Cloud visibility. AppResponse is designed to meet your AWS and Azure cloud monitoring needs monitoring needs.
- **Actionable insight.** There's a saying that packets provide the ultimate source of network truth. AppResponse Cloud stores and analyzes stores all packets all the time so the details are there when you need them.
- **Fast answers.** Built-in analytics highlight issues brewing on the network, allowing you to get ahead of problems before they become full-blown incidents. Streamlined troubleshooting workflows and high-definition application data help you determine answers quickly—typically in minutes.

## Riverbed AppResponse Cloud Highlights

- Response time analysis determine in a glance if slowdowns are caused by the server, network, cloud provider, or client
- Auto discover 2,000+ applications to identify worst performing apps, busiest apps by various metrics such as highest server turns, resets, bandwidth usage, etc
- Quickly identify patterns with patented TruePlot™ technology isolates each unique transaction to help you spot hard-to-find trends
- Built-in integrations with Packet Analyzer and Transaction Analyzer for packet and “what-if” analysis; NetProfiler flow analysis; and Riverbed® Portal, an integrated dashboard.



**Figure 1**  
AppResponse Cloud streamlines network and application troubleshooting in Azure cloud.

Packets are stored directly on the AppResponse Cloud to enable fast triage and diagnosis of intermittent and hard-to-solve performance issues. You can also export packet-based flow metrics from AppResponse Cloud to NetProfiler for consolidated analysis of your hybrid environment.

## Packet Telemetry

AppResponse Cloud can obtain packet feeds in Azure cloud using the following telemetry:

AppResponse Cloud Telemetry		
	Azure	Azure Government
Azure Virtual Network Tap	Yes	Yes
Gigamon GigaSECURE Cloud	Yes	Yes
Keysight CloudLens	Yes	Yes

AppResponse Cloud can get packet telemetry from the above solutions, as well as support AWS (see AWS brief).

## Flow-based Cloud Monitoring

Riverbed® NetProfiler flow monitoring provides a hybrid view of your network performance. It enables you to see your cloud, virtual, and on-premises resources in the same views so you get a truly end-to-end perspective on network and application performance.

NetProfiler can be deployed in Azure and in Azure Government. It can also be deployed in AWS and AWS Government (West) and in virtual and physical appliance form factors for easy multi-cloud and hybrid cloud monitoring.

NetProfiler analyzes flow traffic from across the enterprise – from the core, to the branch, to the cloud. It discovers all application assets, maps dependencies and monitors network and application services, regardless of where they sit.

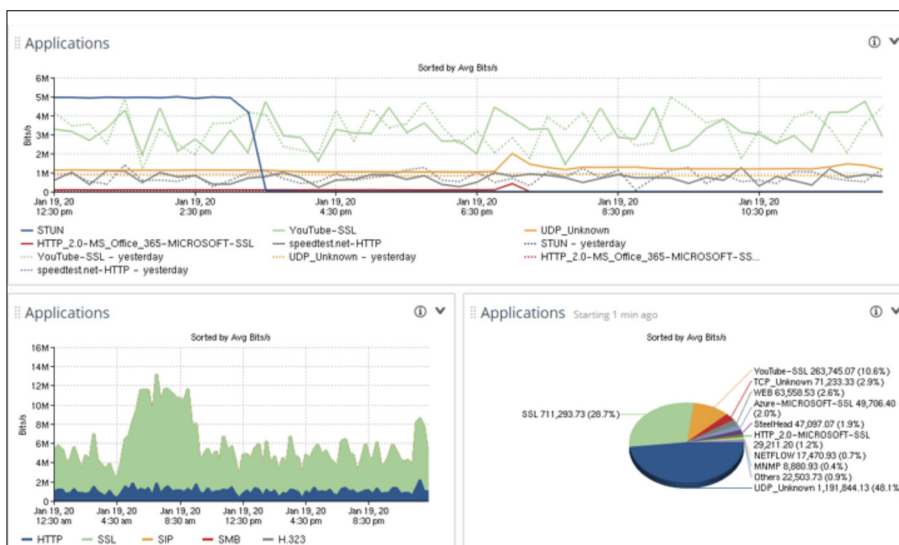
NetProfiler cloud-specific workflows in Azure or Azure Government include:

- What apps are running in the cloud?
- How's the cloud network performing?
- Who's talking to whom?
- How is traffic flowing through the network?
- Where are we incurring costs? And how can we save money?

Whether you're selecting which applications to migrate, planning the move, or monitoring cloud network and application performance, NetProfiler offers rich visibility to make your cloud transformation a success.

**NetProfiler can receive flows in Azure from the following:**

- **Azure NSG Flow Logs** provide information about traffic going to and from network interfaces in Azure
- As noted, **AppResponse Cloud** can also send SteelFlow to NetProfiler, including L7 application tagging and response time
- External/third-party solutions that can generate and send flow in standard format (i.e., NetFlow v5 or v9, IPFIX, etc.)



**Figure 2**  
NetProfiler monitors hybrid cloud performance from Azure, Azure Government, AWS or AWS GovCloud West.

---

## Benefits of Riverbed NPM in Hybrid Environments

Having one seamless visibility solution across your data center, the Internet, and cloud providers, helps you understand the impact performance issues have on your business. With Riverbed, you gain:

- **Ubiquitous cloud visibility.** Gain comprehensive visibility across Azure and AWS multi-cloud or hybrid environments.
- **Deploy in the cloud with confidence.** Get the same proven performance monitoring in the cloud and on-premises.
- **Decreases downtime.** Reduce diagnosis time by using the same rich analytics and proven workflows across hybrid and multi-cloud environments to locate trouble spots quickly.

---

### About Riverbed

Riverbed enables organizations to maximize performance and visibility for networks and applications, so they can overcome complexity and fully capitalize on their digital and cloud investments. The Riverbed Network and Application Performance Platform enables organizations to visualize, optimize, remediate and accelerate the performance of any network for any application, and helps to identify and mitigate cybersecurity threats. The platform addresses performance and visibility holistically with best-in-class WAN optimization, unified network performance management (NPM), application acceleration (including Microsoft 365, SaaS, client and cloud acceleration), and enterprise-grade SD-WAN. Riverbed's 30,000+ customers include 99% of the *Fortune* 100. Learn more at at [riverbed.com](https://riverbed.com).

The Riverbed logo consists of the word "riverbed" in a lowercase, sans-serif font. The letters are a vibrant orange color. The "i" and "e" have a small dot above them, and the "d" has a small tail at the bottom right.