

---

# SteelCentral NetProfiler

---

## Enterprise-wide network flow analytics.

### Business Challenge

Today, network managers must go beyond simply proving that the network is not at fault and start looking at the problem through the lens of the application.

When problems arise, you want to be the first to know. You need a 360 degree view of your network performance — from the data center, to your remote offices, and in the cloud. And, you need to be able to convey network performance details in a way the business will understand them.

### Riverbed SteelCentral NetProfiler

Riverbed® SteelCentral™ NetProfiler provides global network flow analytics that you can use to quickly view network and application performance and troubleshoot issues before your end users ever know there's a problem. SteelCentral NetProfiler combines network flow data with packet-based flow metrics to provide proactive monitoring, analysis, and reporting. Use NetProfiler to answer questions such as how much traffic do I have, who is using it, where is it going, and how is it prioritized?

Learn more about the Riverbed SteelCentral NetProfiler at: [riverbed.com/products/steelcentral/steelcentral-netprofiler.html](https://riverbed.com/products/steelcentral/steelcentral-netprofiler.html).

## Behavioral Analytics

In today's world, network performance is inextricably linked with business performance. IT organizations need to understand how degraded performance affects the end user, and ultimately business performance. NetProfiler uses behavioral analytics for improved monitoring with reduced maintenance requirements. It baselines normal performance and alerts on changes as soon as they occur—typically before users are even aware that performance is degrading.

## Dependency Mapping

NetProfiler automates the mapping of application transactions to their underlying infrastructure so that application definitions and interdependencies are accurate. This helps you create service maps that accelerate the identification of issues across complex application ecosystems, and plan for data center consolidation, cloud, disaster recovery, or virtualization initiatives.

## Hybrid Visibility

In addition to monitoring your enterprise network, NetProfiler provides insight into cloud environments, such as AWS. It answers those cloud-specific questions, such as what resources are you using, who's using it, are you being efficient with your cloud resources, are you incurring unknow costs, and how can you fix problems?

## Integrations

SteelCentral NetProfiler integrates with several other SteelCentral solutions to enrich your every day IT operations functions.

These one-click integrations include:

- Riverbed® SteelCentral™ AppResponse and AppResponse Cloud: network forensics and application analysis
- Riverbed® SteelCentral™ Aternity: end-user experience monitoring from the device perspective
- Riverbed® SteelCentral™ NetIM: infrastructure management
- Riverbed® SteelCentral™ SteelHead™: WAN optimization and functions as remote data source for NetProfiler
- Riverbed® SteelCentral™ Portal: single source of truth for network, application, infrastructure performance and end-user experience monitoring

“SteelCentral has reduced the time it takes us to identify network slowdowns and application performance issues. It saves my network team a lot of time.”

Operations Manager,  
Small Business Consume Products Company

“The reporting capabilities of SteelCentral NetProfiler are awesome. It can generate any type of report I need!”

Network Administrator,  
Large Enterprise Electronics Company

## Key Benefits

- Improve user experience and productivity
- Enhance IT collaboration and operational efficiency
- Speed problem identification and resolution
- Increase application visibility and improve app performance

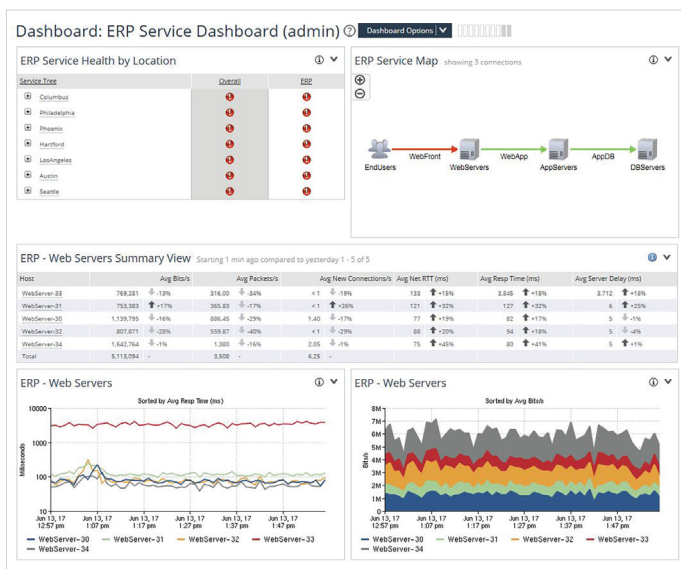


Figure 1

NetProfiler dashboards include everything you need to know from the highest level to the most granular detail with one-click drilldown for root cause and problem isolation and deep application visibility.

---

## Key Features

### Traffic analysis

- NetProfiler captures full-resolution network data — flow records (NetFlow, sFlow, IPFIX, etc.), and performance metrics — across all internal and cloud network paths.

### Application recognition and monitoring

- NetProfiler offers three ways to create a custom application definition. You can map:
  - Hosts, host groups, protocols, ports to an application name
  - Auto-recognized applications to an application name
  - URLs to an application name
- Deep packet inspection of application traffic from SteelCentral AppResponse, SteelCentral NetShark and SteelHead for easy viewing and analysis in the NetProfiler dashboard to help you quickly and accurately distinguish business-critical from recreational applications that are running across your network including the optimized WAN

### Anomaly Detection

- Uses baseline statistics and proactive monitoring to trigger an alert once a deviation is detected, without prior knowledge of specific applications, path dependencies, and number of users

### SD-WAN visibility

- Ensure the success of your SteelConnect SD-WAN environment by validating policies are working as expected, troubleshooting problems quickly, and enabling better planning
- Requires SteelCentral Insights for SteelConnect

### Discovery and dependency mapping

- Includes a discovery wizard that creates application dashboards to automate the process of mapping transactions to their underlying infrastructure so that application definitions and interdependencies are accurate— including discovering through F5, Riverbed® SteelApp™ Traffic Manager and other application delivery controllers (ADCs)
- Creates service maps for accelerating troubleshooting across complex application ecosystems, and planning for data center consolidation or cloud, disaster recovery, and virtualization initiatives

### WAN optimization analysis

- Robust analysis of optimized WAN environments enable you to easily plan your optimization deployments, assess the impact, and quantify benefits
- Cost-effective troubleshooting of branch issues using a single product for visibility, control and optimization
- Centralized reporting and monitoring of SteelHead quality of service (QoS) site and classes
- Rich application visibility/monitoring through deep packet inspection (DPI)

### Streamlined workflows

- One-click dashboard creation creates NetOps-centric, application-specific, SteelHead WAN optimization-specific, and VoIP-related dashboards that quickly surface relevant data and streamline troubleshooting workflows

### Service monitoring

- Monitor all network and infrastructure components involved in delivering an application service such as users, Web servers, load balancers, application servers, authentication and DNS servers, databases, and the links between them
- Advanced analytics changes in performance, providing proactive notification of brewing issues
- Service dashboards provide a quick view into the end-to-end health of a business service that is visually shown by red-yellow-green health status indicators
- Guided drill down reveals details of the most critical applications and essential data for fast troubleshooting

### Server virtualization and VMware NSX SDN

- NSX-aware IPFIX format enables SteelCentral products to provide detailed information about what NSX virtual overlay networks are running on the physical network, what applications are involved, and which hosts and virtual tunnel endpoints are generating the traffic

### Cloud Visibility

- Supports AWS
- Hybrid cloud and cloud-specific reporting
  - AWS Information
  - AWS Billable Data Transfer

NetProfiler 10.10 is IPv6 and USGv6 certified, and can support both IPv6 and IPv4 addresses simultaneously.



---

## Related Products

### SteelCentral Flow Gateway

NetProfiler requires one or more Flow Gateways to collect flow from across the network.

### SteelCentral Portal

NetProfiler provides SteelCentral Portal with network-centric information such as Top Interfaces, Top Talkers, etc. to contribute toward a true end-to-end view of application performance.

### SteelCentral NetIM

Seamlessly marries network data with SNMP information so you can access device metrics directly from the NetProfiler interface and network performance data from NetIM.

## SteelCentral Aternity

Aternity has a bi-directional integration with NetProfiler. It provides access to network troubleshooting metrics from Aternity and resolves IP addresses to user names/EUE metrics from NetProfiler.

In addition to flow-enable devices, such as routers, switches, firewalls, etc., NetProfiler can accept packet-based flow data from the following sources:

### SteelCentral AppResponse

Network-based application performance management that integrates network forensics and historical analysis, application analytics and end-user experience monitoring.

## SteelCentral AppResponse Cloud

A version of AppResponse that monitors/troubleshoots network and application analytics in the cloud.

## SteelCentral NetShark

Continuous, high-speed packet capture, indexing, and storage.

## Product Models

SteelCentral NetProfiler supports from 2 million to 200 million raw flows per minute.

### SteelCentral NetProfiler Standard Edition

Models	SCNP-02270 Series				
Configuration	F1	F2	F3	F4	F5
Flow Capacity	200,000	400,000	600,000	800,000	1M
Raw Flow Capacity	2M	4M	6M	8M	10M

### SteelCentral NetProfiler Enterprise Edition

Models	SCNP-04270 Series			SCNP-04270 Expansion	
Configuration	UI	DB	AN	EX	DP
Flow Capacity	N / A	N / A	1M	1M	N / A
Raw Flow Capacity	N / A	N / A	10M	10M	N / A
Max Flow Capacity	N / A	N / A	1M	20M	N / A

SteelCentral NetProfiler Virtual Edition supports from 150,000 to 30 million raw flows per minute.

### SteelCentral NetProfiler Virtual Edition Series

Models	SCNP-VE Series										
Configuration	F1	F2	F3	F4	F5	F6	F7	F8	F9	F10	F11
Flow Capacity	15,000	30,000	60,000	90,000	200,000	400,000	600,000	800,000	1M	2M	3M
Raw Flow Capacity	150,000	300,000	600,000	900,000	2 M	4M	6M	8M	10M	20M	30M
Hypervisor	VMWare ESXi 6.0 and 6.5										

SteelCentral NetProfiler Virtual Edition runs on VMware vSphere to provide you with added deployment flexibility for virtualized data centers and software-defined networks. For complete configuration details and product models, please visit [riverbed.com](http://riverbed.com) to download the SteelCentral specification sheet.

## Gartner Magic Quadrant Recognition

Riverbed is a five-time leader in the Gartner Network Performance Monitoring and Diagnostics (NPMD) [magic quadrant](#).\*

\*Gartner does not endorse any vendor, product or service depicted in its research publications, and does not advise technology users to select only those vendors with the highest ratings. Gartner research publications consist of the opinions of Gartner's research organization and should not be construed as statements of fact. Gartner disclaims all warranties, expressed or implied, with respect to this research, including any warranties of merchantability or fitness for a particular purpose.

### About Riverbed

Riverbed®, The Digital Performance Company™, enables organizations to maximize digital performance across every aspect of their business, allowing customers to rethink possible. At more than \$1 billion in annual revenue, Riverbed's 30,000+ customers include 98% of the *Fortune* 100 and 100% of the *Forbes* Global 100. Learn more at [riverbed.com](http://riverbed.com).

