

Imagine time better spent

The average MTTR of network issues takes

3^{1/2}+
hours to resolve

72%
of that time is spent finding the root cause

Imagine what you could get up to, if only you had better network visibility...



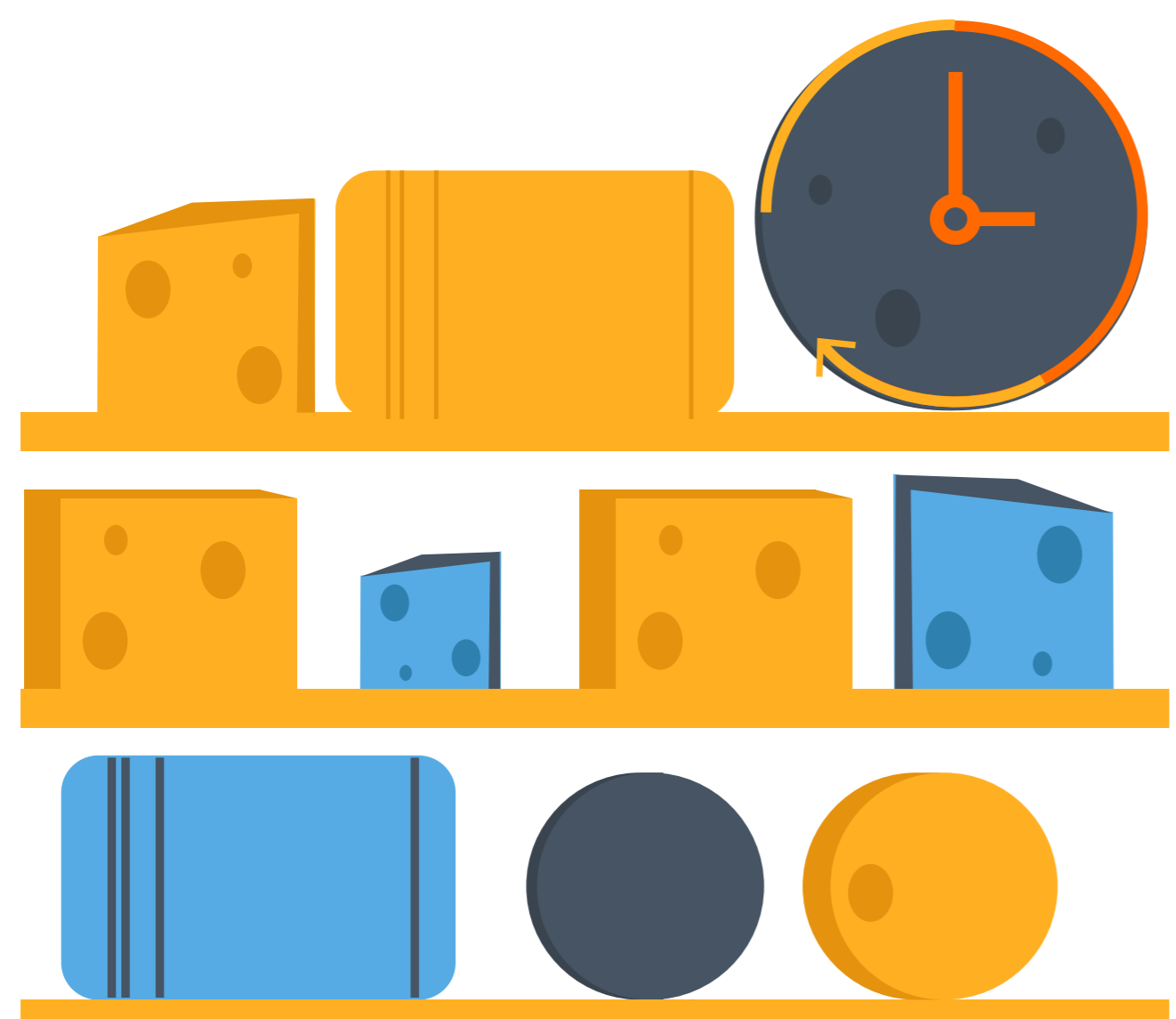
1. Cycle from Bellinzona to Lugano



2. Ski in the shadow of the Matterhorn



3. Learn the art of cheese making in Gruyeres



4. Take a boat trip around Lake Lucerne



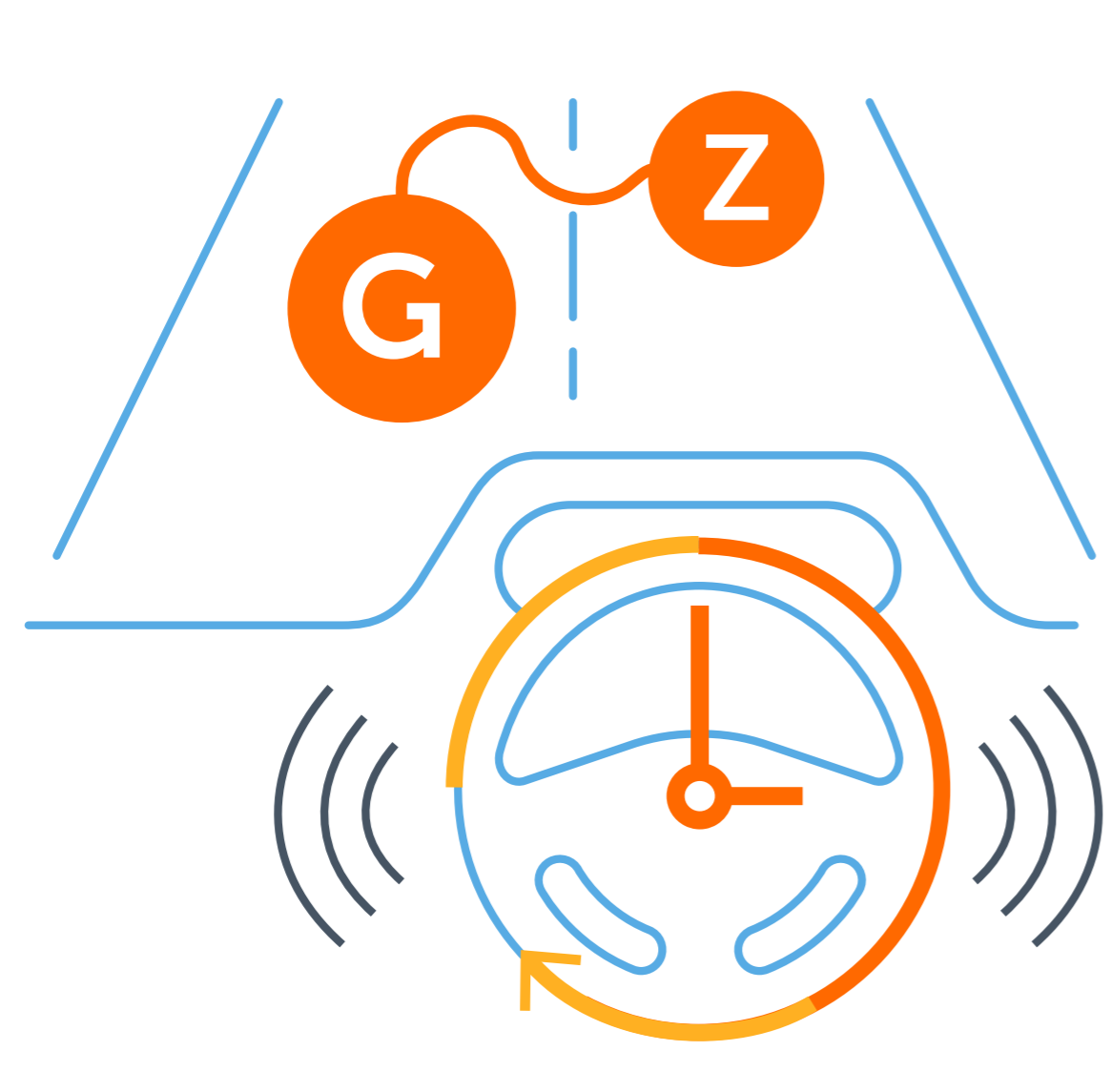
5. Run a marathon (if you're fast!)



6. Visit the Rhine Falls



7. Drive from Geneva to Zurich



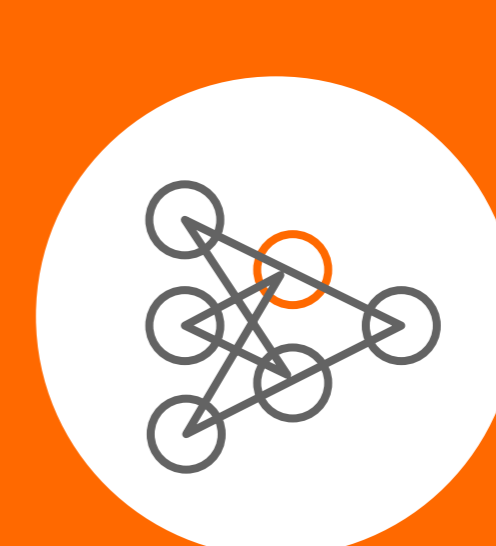
Reduce MTTR with Riverbed unified NPM



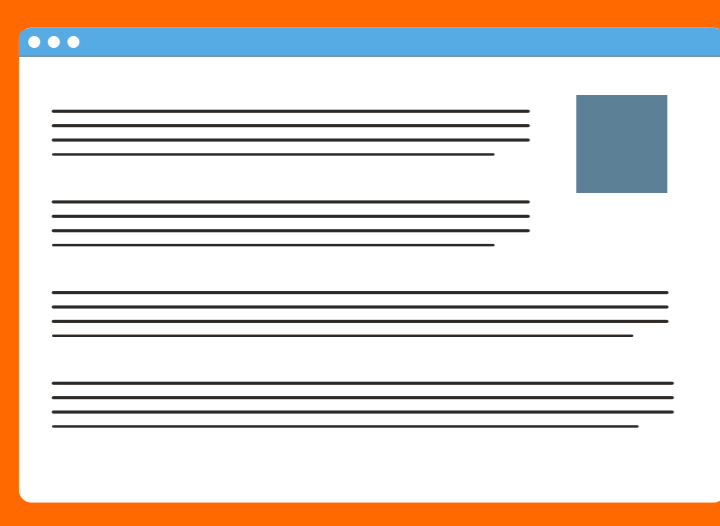
Packet



Flow



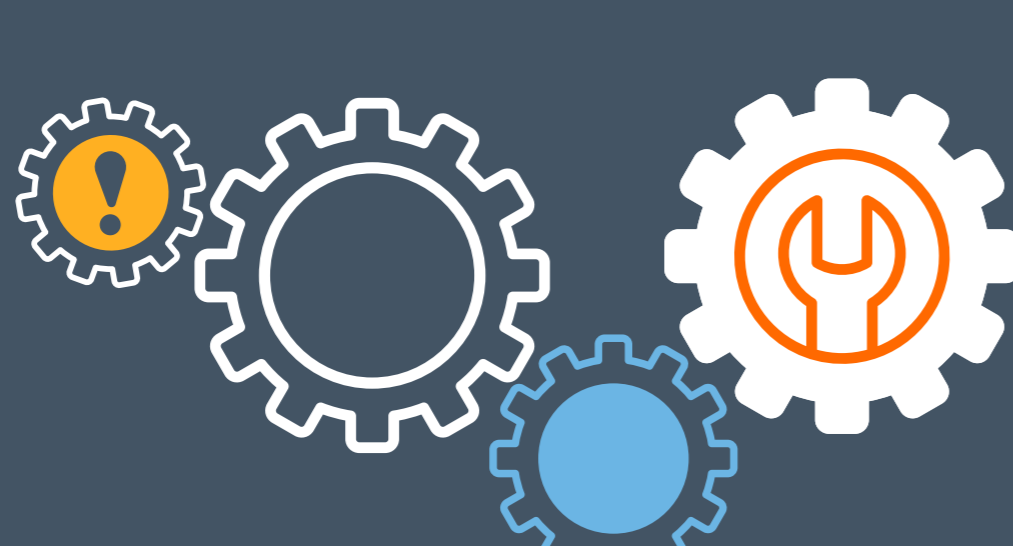
Infrastructure



All From One Platform



Reduce MTTR



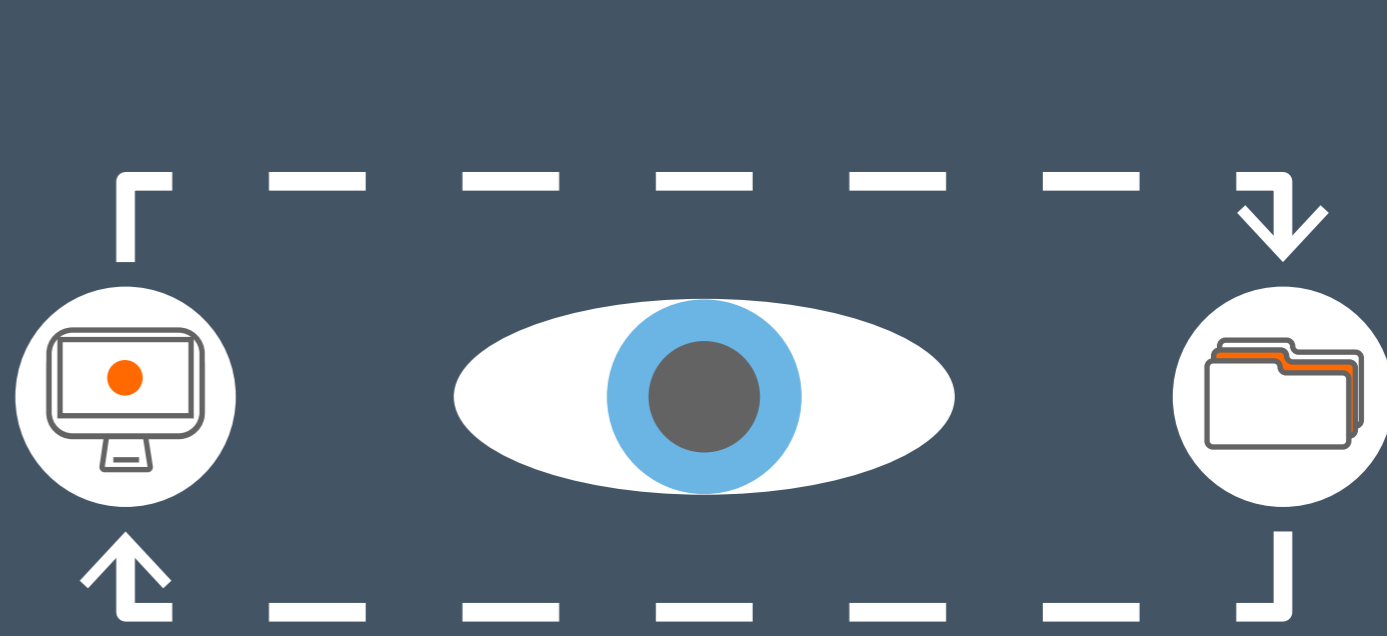
Real-Time Response



Remove Cloud Blind Spots



End to End Unified Visibility



Continuous Packet Capture

10012304	5.3.23	ICH	REQUEST
00001324	12.4.33	PPT	REPLY
00213003	1.2.45	ICH	REPLY
30029343	14.23.3	TIV	ECHO
39209401	4.45.3	ICH	REQUEST
00213003	1.2.45	ICH	REPLY

Improve Productivity



Quickly identify and remedy network issues with Riverbed NPM.

LEARN MORE

CONTACT US

