

NetProfiler

Proactive, ubiquitous flow monitoring for hybrid, multi-cloud and SD-WAN

Business Challenge

“The network is slow.” If you’re like most netops managers, you probably hear this complaint too often. To really understand what’s occurring on your network, you need an end-to-end view of the hybrid network into performance issues.

Riverbed® NetProfiler

Riverbed NetProfiler provides network flow analytics that you can use to quickly diagnose network issues and identify security threats before end users ever know there’s a problem. NetProfiler combines network flow data with packet-based flow metrics to provide proactive monitoring, analysis, and reporting. Use NetProfiler to answer questions such as how much traffic do I have, who is using it, where is it going, and how is it prioritized?

Behavioral Analytics

IT organizations need to understand how degraded performance affects network and application performance, and ultimately business performance. NetProfiler uses behavioral analytics for proactive monitoring. It baselines normal performance and alerts on changes as soon as they occur—typically before users are even aware that performance is degrading.

Dependency Mapping

NetProfiler automates the mapping of application transactions to their underlying infrastructure so that application definitions and interdependencies are accurate. This helps you create service maps that accelerate the identification of issues across complex application ecosystems, and plan for data center consolidation, cloud, disaster recovery, or virtualization initiatives.

Ubiquitous Visibility

Deploy anywhere and everywhere you need for on-premise, virtual, or cloud visibility. NetProfiler is designed to meet your hybrid and cloud needs, supporting Azure NSG Flow Logs, AWS VPC Flow Logs and Google Cloud VPC Flow Logs.

For more information on NetProfiler, please visit: riverbed.com/netprofiler.

Integrations

NetProfiler integrates with several other Riverbed NPM solutions to enrich your every day IT operations functions.

These one-click integrations include:

- **Riverbed® AppResponse and AppResponse Cloud:** network forensics and networked application analysis
- **Riverbed® NetIM:** infrastructure management with network path analysis
- **Riverbed® SteelHead™:** WAN optimization and functions as remote data source for NetProfiler
- **Riverbed® Portal:** single source of truth for network, application, infrastructure performance, and end-user experience monitoring
- **Riverbed® IQ:** Unified observability platform with AI driven metrics and event correlation

“Riverbed NPM has reduced the time it takes us to identify network slowdowns and application performance issues. It saves my network team a lot of time.”

Operations Manager,
Small Business Consume Products Company

“The reporting capabilities of Riverbed NetProfiler are awesome. It can generate any type of report I need!”

Network Administrator,
Large Enterprise Electronics Company

Key Benefits

Improve cloud and hybrid network visibility and performance

Speed problem identification and resolution

Mitigate cyber-security risks

NetProfiler Home Screen

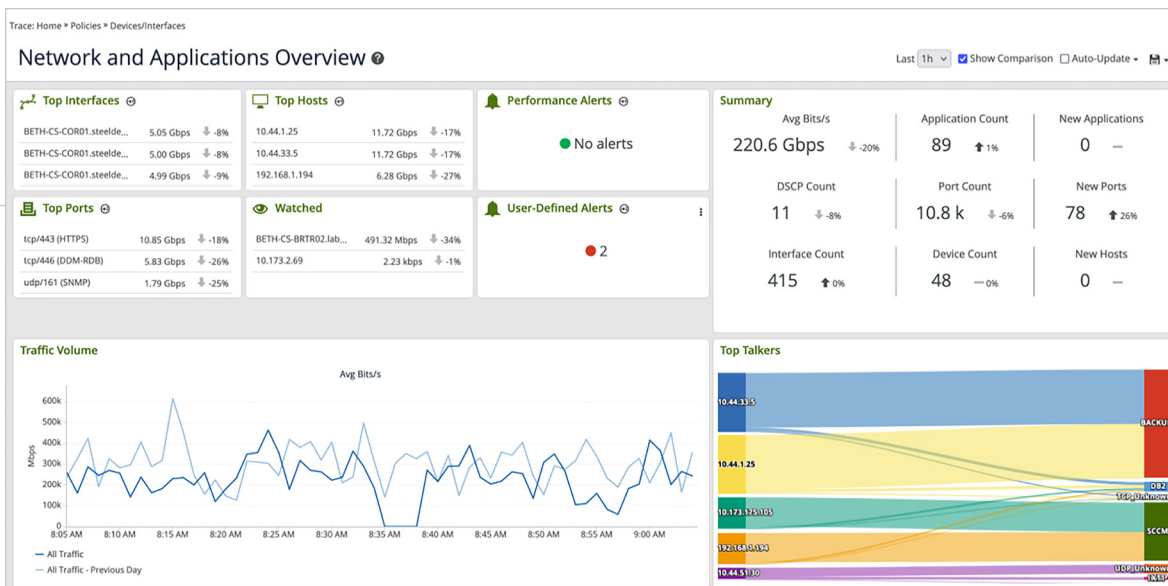


Figure 1: Personizable to each user, the NetProfiler Home Screen offers an at-a-glance summary of the network and how it’s changed; recent alerts; To Talkers Sankey; overall traffic charts, and a watch list so you can see what’s important to you.

Key Features

Application Recognition and Monitoring

NetProfiler offers three ways to create a custom application definition. You can map:

- Hosts, host groups, protocols, ports to an application name
- Auto-recognized applications to an application name
- URLs to an application name

Deep packet inspection of application traffic from Riverbed AppResponse, NetShark and SteelHead for easy viewing and analysis in the NetProfiler dashboard to help you quickly and accurately distinguish business-critical from recreational applications that are running across your network including the optimized WAN.

Anomaly Detection

Leverages baseline statistics and proactive monitoring to trigger alerts upon detecting deviations, while integrating metadata from APIs, SD-WAN orchestrators, and Cloud Flow Logs for enriched anomaly detection. These AI-powered insights provide real-time visibility into security policy enforcement by reporting both ACCEPTED and DENIED flows from AWS and Azure, helping IT teams detect blocked traffic, troubleshoot policy misconfigurations, and strengthen cloud security compliance.

SD-WAN Visibility

Ensure the success of your Cisco Viptela, VeloCloud and Versa SD-WAN environment by understanding network and application performance of the traffic on both the SD-WAN overlay and the underlying physical network.

Discovery and Dependency Mapping

- Includes a discovery wizard that creates application dashboards to automate the process of mapping transactions to their underlying infrastructure so that application definitions and interdependencies are accurate— including discovering through F5, Riverbed® SteelApp™ Traffic Manager and other application delivery controllers (ADCs).
- Creates service maps for accelerating troubleshooting across complex application ecosystems, and planning for data center consolidation or cloud, disaster recovery, and virtualization initiatives.

WAN Optimization Analysis

- Robust analysis of optimized Riverbed SteelHead and Interceptor environments enable you to easily plan your optimization deployments, assess the impact, and quantify benefits.
- Cost-effective troubleshooting of branch issues using a single product for visibility, control and optimization.
- Centralized reporting and monitoring of inbound and outbound quality of service (QoS) site and classes.
- Rich application monitoring of 2000+ default applications and custom- defined apps.

Streamlined Workflows

One-click dashboard creation creates NetOps-centric, application-specific, SteelHead WAN optimization-specific, and VoIP-related dashboards that quickly surface relevant data and streamline troubleshooting workflows.

Home Screen

Offers at-a-glance summary of key network and application KPIs and how they've changed; recent performance and security alert lists; Top Talkers sankey diagram; overall traffic, cloud performance; and watch list so you can monitor what's important to you.

Service Monitoring

- Monitor all network and infrastructure components involved in delivering an application service such as users, Web servers, load balancers, application servers, authentication and DNS servers, databases, and the links between them.
- Proactive notifications for flow collection failures and policy runtime issues to ensure IT teams can quickly identify and resolve anomalies before they impact business operations.
- Service dashboards provide a quick view into the end-to-end health of a business service that is visually shown by red-yellow-green health status indicators.
- Guided drill down reveals details of the most critical applications and essential data for fast troubleshooting.
- Precomputed data backups allow for faster disaster recovery and seamless migration between NetProfiler instances.

Learn More

For more information about Riverbed NetProfiler specifications, please visit riverbed.com/NPM.

Server Virtualization

NSX-aware IPFIX format enables Riverbed NPM products to provide detailed information about what NSX virtual overlay networks are running on the physical network, what applications are involved, and which hosts and virtual tunnel endpoints are generating the traffic. Also collect, analyze and manage cloud flows for Nutanix Hyper-V/Microsoft Azure Stack HCI.

Cloud Visibility

NetProfiler is deployable across VMware, Nutanix, Hyper-V, AWS, AWS GovCloud, Azure, and Google Cloud (GCP) environments, ensuring seamless integration into hybrid and multi-cloud architectures while delivering enhanced performance for large-scale deployments.

Cloud Flow Telemetry

The following flow telemetry can generate and send flow for the cloud to NetProfiler in the cloud or on-prem:

- AppResponse Cloud
- AWS VPC Flow Logs
- Azure NSG Flow Logs
- Azure Government (non-DoD, no Iowa)
- Google Cloud (GCP) VPC Flow Logs



About Riverbed

Riverbed, the leader in AI observability, helps organizations optimize their users' experiences by leveraging AI automation for the prevention, identification, and resolution of IT issues. With over 20 years of experience in data collection and AI and machine learning, Riverbed's open and AI-powered observability platform and solutions optimize digital experiences and greatly improve IT efficiency. Riverbed also offers industry-leading Acceleration solutions that provide fast, agile, secure acceleration of any app, over any network, to users anywhere. Together with our thousands of market-leading customers globally – including 95% of the *FORTUNE* 100 – we are empowering next-generation digital experiences. Learn more at riverbed.com.